

Basisgriffe Teil 2

Lieder mit 2 Akkorden

Julian Kleiss

Chuck Berry - "You Never Can Tell" (1964)

C⁵ C⁵ C⁵ G⁵ 4

1-ke-ti-mi 2-ke-ti-mi 3-ke-ti-mi 4-ke-ti-mi 5 6 7 8 9 10 11 12 13 14 15 16

I V

G⁵ G⁵ G⁵ C⁵ 8

1 2 3 4 5 6 7 8 9 10 11 12 13 14 15 16

V I

1 - ke - ti - mi 2 - ke - ti - mi 3 - ke - ti - mi 4 - ke - ti - mi

C C

1 ketimi 2 ketimi 3 ketimi 4 ketimi 5 ketimi 6 ketimi 7 ketimi 8-ke-ti - mi

C G

9 ketimi 10ketimi 11ketimi 12ketimi 13ketimi 14ketimi 15ketimi 16 - ke - ti - mi

G G

1 ke timi 2 ke timi 3 ke timi 4 ke timi 5 ke timi 6 ke timi 7 ke timi 8 ke timi

G C

9 ke ti mi 10ke ti mi 11ke timi 12-ke-ti-mi 13ke ti mi 14ke ti mi 15-ke-ti-mi 16-ke-ti-mi

The Beatles - "Paperback Writer" (1966)

Acapella G⁷

1 2 3 4 5 6 7 8 1 - ke - ti - mi 2 - ke - ti mi 3 - ke ti mi 4 - ke ti mi
V

Strofe G⁵ G⁵ G⁵ G⁵ 4

1 ketimi 2 - ke - ti - mi 3 ketimi 4 - ke - ti - mi 5 6 7 8 9 10 11 12 13 14 15 16
V

C⁵ G⁷

1 2 3 4 5 - ke - ti - mi 6 - ke - ti - mi 7 - ke - ti - mi 8 - ke - ti - mi
V V

1 - ke - ti - mi 2 - ke - ti - mi 3 - ke - ti - mi 4 - ke - ti - mi

The Beatles - "Eleanor Rigby" (1966)

Refrain C C Em Em

1 2 3 4 5 6 7 8 9 10 11 12 13 14 15 16
IV vi

Strofe Em Em Em C C Em

1 2 3 4 5 6 7 8 9 10 11 12 13 14 15 16 17 18 19 20
vi ii ii IV IV vi

Em⁷ Em⁶ Em^(b6) Em

1 2 3 4 5 6 7 8 9 10 11 12 13 14 15 16
vi ii vi vi

A Bm7 Bm7 A 4

1 - o - le 2 - o - le 3 - o - le 4 - o - le 5 6 7 8 9 10 11 12 13 14 15 16
I ii ii I

A Bm7 Bm7 A 4

1 - o - le 2 - o - le 3 - o - le 4 - o - le 5 6 7 8 9 10 11 12 13 14 15 16

A Bm7 Bm7 A 4

1 - o - le 2 - o - le 3 - o - le 4 - o - le 5 6 7 8 9 10 11 12 13 14 15 16

1-o-le 2-o-le 3-o-le 4-o-le 1-o-le 2-o-le 3-o-le 4-o-le 1-o-le 2-o-le 3-o-le 4-o-le

A Bm7

1 - o - le 2 - o - le 3 - o - le 4 - o - le 1 - o - le 2 - o - le 3 - o - le 4 - o - le

Bm7 A

1 - o - le 2 - o - le 3 - o - le 4 - o - le 1 - o - le 2 - o - le 3 - o - le 4 - o - le

A Bm7

1 - o - le 2 - o - le 3 - o - le 4 - o - le 1 - o - le 2 - o - le 3 - o - le 4 - o - le

Bm7 A

1 - o - le 2 - o - le 3 - o - le 4 - o - le 1 - o - le 2 - o - le 3 - o - le 4 - o - le

Santana - "Oye Como Va" (1970)

Am D⁷

1 - ke - ti - mi 2 - ke - ti - mi 3 - ke - ti - mi 4 - ke - ti - mi

ii V

Detailed description: This block shows the first line of musical notation for the song. It consists of a single staff in treble clef with a key signature of one flat (B-flat). The melody is a simple eighth-note pattern: G4, A4, Bb4, G4. This pattern is repeated four times. Above the staff, the chord 'Am' is written above the first two notes, and 'D7' is written above the last two notes. Below the staff, the lyrics '1 - ke - ti - mi' are aligned with the first two notes, and '2 - ke - ti - mi' with the next two. This is followed by '3 - ke - ti - mi' and '4 - ke - ti - mi'. Below the lyrics, the Roman numerals 'ii' and 'V' are placed under the first and third measures respectively.

Am D⁷

1 - ke - ti - mi 2 - ke - ti - mi 3 - ke - ti - mi 4 - ke - ti - mi

ii V

Detailed description: This block shows the second line of musical notation. The melody is more complex, featuring eighth and sixteenth notes. The notes are: G4, A4, Bb4, G4, A4, Bb4, G4, A4, Bb4, G4, A4, Bb4, G4, A4, Bb4, G4. Above the staff, 'Am' is written above the first two notes, and 'D7' is written above the last two notes. Below the staff, the lyrics '1 - ke - ti - mi' are aligned with the first two notes, '2 - ke - ti - mi' with the next two, '3 - ke - ti - mi' with the next two, and '4 - ke - ti - mi' with the last two. Below the lyrics, the Roman numerals 'ii' and 'V' are placed under the first and third measures respectively.

Am D⁷

1 - ke - ti - mi 2 - ke - ti - mi 3 - ke - ti - mi 4 - ke - ti - mi

Detailed description: This block shows the third line of musical notation. The melody is a simple eighth-note pattern: G4, A4, Bb4, G4. This pattern is repeated four times. Above the staff, the chord 'Am' is written above the first two notes, and 'D7' is written above the last two notes. Below the staff, the lyrics '1 - ke - ti - mi' are aligned with the first two notes, '2 - ke - ti - mi' with the next two, '3 - ke - ti - mi' with the next two, and '4 - ke - ti - mi' with the last two.

1 - ke - ti - mi 2 - ke - ti - mi 3 - ke - ti - mi 4 - ke - ti - mi

Detailed description: This block shows the fourth line of musical notation. It consists of a single staff in treble clef with a key signature of one flat (B-flat). The melody is a simple eighth-note pattern: G4, A4, Bb4, G4. This pattern is repeated four times. Below the staff, the lyrics '1 - ke - ti - mi' are aligned with the first two notes, '2 - ke - ti - mi' with the next two, '3 - ke - ti - mi' with the next two, and '4 - ke - ti - mi' with the last two.

1 - ke - ti - mi 2 - ke - ti - mi 3 - ke - ti - mi 4 - ke - ti - mi

Detailed description: This block shows the fifth line of musical notation. It consists of a single staff in treble clef with a key signature of one flat (B-flat). The melody is a simple eighth-note pattern: G4, A4, Bb4, G4. This pattern is repeated four times. Below the staff, the lyrics '1 - ke - ti - mi' are aligned with the first two notes, '2 - ke - ti - mi' with the next two, '3 - ke - ti - mi' with the next two, and '4 - ke - ti - mi' with the last two.

Bill Withers - "Use Me" (1972)

Em⁷ G

1 - ke - ti - mi 2 - ke - ti - mi 3 - ke - ti - mi 4 - ke - ti - mi
ii

Detailed description: This block shows the first line of the song's melody. It consists of a single staff with a treble clef and a key signature of one flat (B-flat). The melody is written in a simple, rhythmic style with quarter notes and eighth notes. Above the staff, the chord Em⁷ is indicated for the first two measures, and the chord G is indicated for the last two measures. Below the staff, the lyrics '1 - ke - ti - mi 2 - ke - ti - mi 3 - ke - ti - mi 4 - ke - ti - mi' are written, with a 'ii' below the first measure.

A⁷

5 - ke - ti - mi 6 - ke - ti - mi 7 - ke - ti - mi 8 - ke - ti - mi
V

Detailed description: This block shows the second line of the melody. It consists of a single staff with a treble clef and a key signature of one flat. The melody continues with quarter notes and eighth notes. Above the staff, the chord A⁷ is indicated for the entire line. Below the staff, the lyrics '5 - ke - ti - mi 6 - ke - ti - mi 7 - ke - ti - mi 8 - ke - ti - mi' are written, with a 'V' below the first measure.

Em A

1 - ke - ti mi 2 ke ti - mi 3 - ke ti mi 4 - ke - ti mi 5 - ke ti mi 6 ketimi 7 - ke - ti - mi 8 ketimi

Detailed description: This block shows the third line of the melody. It consists of a single staff with a treble clef and a key signature of one flat. The melody is more complex, featuring eighth notes and quarter notes. Above the staff, the chord Em is indicated for the first four measures, and the chord A is indicated for the last four measures. Below the staff, the lyrics '1 - ke - ti mi 2 ke ti - mi 3 - ke ti mi 4 - ke - ti mi 5 - ke ti mi 6 ketimi 7 - ke - ti - mi 8 ketimi' are written.

Em A

1 ketimi 2 - ke - ti - mi 3 - ke - ti - mi 4 - ke - timi 5 ketimi 6 - ketimi 7 - ke - ti - mi 8 - ke - ti - mi

Detailed description: This block shows the fourth line of the melody. It consists of a single staff with a treble clef and a key signature of one flat. The melody continues with eighth notes and quarter notes. Above the staff, the chord Em is indicated for the first four measures, and the chord A is indicated for the last four measures. Below the staff, the lyrics '1 ketimi 2 - ke - ti - mi 3 - ke - ti - mi 4 - ke - timi 5 ketimi 6 - ketimi 7 - ke - ti - mi 8 - ke - ti - mi' are written.

1 ke timi 2 - ke timi 3 - ke - ti - mi 4 - ketimi 1 ke timi 2 - ke timi 3 - ketimi 4 - ke timi

Detailed description: This block shows the fifth line of the melody. It consists of a single staff with a treble clef and a key signature of one flat. The melody is written in a simple, rhythmic style with quarter notes and eighth notes. Below the staff, the lyrics '1 ke timi 2 - ke timi 3 - ke - ti - mi 4 - ketimi 1 ke timi 2 - ke timi 3 - ketimi 4 - ke timi' are written.

Em A

1 ke timi 2 - ke timi 3 - ke timi 4 - ke timi 5 ke timi 6 - ke ti mi 7 - ke ti mi 8 - ke ti mi

Detailed description: This block shows the sixth line of the melody. It consists of a single staff with a treble clef and a key signature of one flat. The melody continues with eighth notes and quarter notes. Above the staff, the chord Em is indicated for the first four measures, and the chord A is indicated for the last four measures. Below the staff, the lyrics '1 ke timi 2 - ke timi 3 - ke timi 4 - ke timi 5 ke timi 6 - ke ti mi 7 - ke ti mi 8 - ke ti mi' are written.

Bob Marley - "Lively Up Yourself" (1974)

1 - o - le 2 - o - le 3 - o - le 4 - o - le

1-o-le 2-o-le 3-o-le 4-o-le 5 6 7 8 9 10 11 12 13 14 15 16
I IV I I

1 - o - le 2 - o - le 3 - o - le 4 - o - le 5 - o - le 6 - o - le 7 - o - le 8 - o - le

9 - o - le 10 - o - le 11 - o - le 12 - o - le 13 - o - le 14 - o - le 15 - o - le 16 - o - le

1 - o - le 2 - o - le 3 - o - le 4 - o - le 5 - o - le 6 - o - le 7 - o - le 8 - o - le

9 - o - le 10 - o - le 11 - o - le 12 - o - le 13 - o - le 14 - o - le 15 - o - le 16 - o - le

Fleetwood Mac - "Dreams" (1977)

Michael Jackson - "Don't Stop 'Til You Get Enough" (1979)

The Sugarhill Gang - "Rapper's Delight" (1980)

Em⁷ Em⁷ A⁷ A⁷

1 u 2 u 3 u 4 u 5 u 6 u 7 u 8 u 9 u 10 u 11 u 12 u 13 u 14 u 15 u 16 u

ii V

1 - ke - ti - mi 2 - ke - ti - mi 3 - ke - ti - mi 4 - ke - ti - mi

Em⁷ Em⁷

1 u 2 u 3 u 4 u 5 - ke - ti - mi 6 - ke - ti - mi 7 - ke - ti - mi 8 - ke - ti - mi

A⁷ A⁷

9 u 10 u 11 u 12 u 13 - ke - ti - mi 14 ke - ti - mi 15 ke ti mi 16 - ke - ti - mi

D E

1 2 3 4 5 6 7 8

IV

V

D E

1 2 3 4 5 6 7 8

XII.

1 u 2 u 3 u 4 u 5 u 6 u 7 u 8 u

1 - ke - ti - mi 2ketimi3 - ketimi4ketimi 5 - ke - ti - mi 6ketimi7 - ketimi8ketimi

1 - ke - ti - mi 2 - ke - ti - mi 3 - ke - ti - mi 4 - ke - ti - mi

Salt-N-Pepa - "Push It" (1986)

Am G

1 u 2 u 3 u 4 u 5 u 6 u 7 u 8 u

vi

V

1 u 2 u 3 u 4 u 5 u 6 u 7 u 8 u

Am G Am G

1 u 2 u 3 u 4 u 5u6u7u8u 9 u10 u 11 u 12 u 13 u 14 u 15 u 16 u

A Tribe Called Quest - "Can I Kick It?" (1990)

C Fmaj7

1 ketimi 2 ketimi 3 ketimi 4 - ke-ti-mi 5 ketimi 6 ketimi 7 ketimi 8 - ketimi

I IV

C Fmaj7

1 2 3 4 5 6 7 8

I IV

1 - ke - ti - mi 2 - ke - ti - mi 3 - ke - ti - mi 4 - ke - ti - mi

Billy Ray Cyrus - "Achy Breaky Heart" (1992)

A⁵ A⁵ A⁵ E⁵

1 u 2 u 3 u 4 u 5 u 6 u 7 u 8 u 9 u 10 u 11 u 12 u 13 u 14 u 15 u 16 u

E⁵ V E⁵ E⁵ A⁵ V

1 u 2 u 3 u 4 u 5 u 6 u 7 u 8 u 9 u 10 u 11 u 12 u 13 u 14 u 15 u 16 u

V V

1 u 2 u 3 u 4 u 5 u 6 u 7 u 8 u

A⁵ A⁵ A⁵ E⁵

1 u 2 u 3 u 4 u 5 u 6 u 7 u 8 u 9 u 10 u 11 u 12 u 13 u 14 u 15 u 16 u

E⁵ E⁵ E⁵ A⁵

1 u 2 u 3 u 4 u 5 u 6 u 7 u 8 u 9 u 10 u 11 u 12 u 13 u 14 u 15 u 16 u

Salt-N-Pepa - "Whatta Man" (1993)

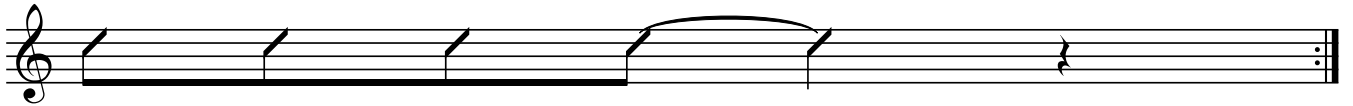
G⁷



1 - ke - ti - mi 2 - ke - ti - mi 3 - ke - ti - mi 4 - ke - ti - mi

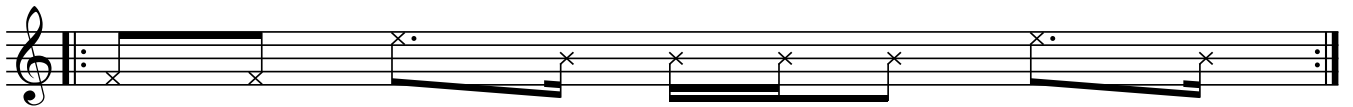
II

C⁷



5 - ke - ti - mi 6 - ke - ti - mi 7 - ke - ti - mi 8 - ke - ti - mi

V



1 - ke - ti - mi 2 - ke - ti - mi 3 - ke - ti - mi 4 - ke - ti - mi



1 - ke - ti - mi 2 - ke - ti - mi 3 - ke - ti - mi 4 - ke - ti - mi



5 - ke - ti - mi 6 - ke - ti - mi 7 - ke - ti - mi 8 - ke - ti - mi

G⁷



1 - ke - ti - mi 2 - ke - ti - mi 3 - ke - ti - mi 4 - ke - ti - mi

II

C⁷



5 - ke - ti - mi 6 - ke - ti - mi 7 - ke - ti - mi 8 - ke - ti - mi

V

Sublime - "What I Got" (1996)

Musical notation for Sublime - "What I Got" (1996). The first system shows a melody with lyrics "1 - ke - ti - mi 2 - ke - ti - mi 3 - ke - ti - mi 4 - ke - ti - mi" and chords D and G. The second system shows a guitar accompaniment with lyrics "1 - ke - ti - mi 2 - ke - ti - mi 3 - ke - ti - mi 4 - ke - ti - mi". The third system shows a melody with lyrics "1 - ke - ti - mi 2 - ke - ti - mi 3 - ke - ti - mi 4 - ke - ti - mi".

Shaggy - "Luv Me, Luv Me" (2000)

Musical notation for Shaggy - "Luv Me, Luv Me" (2000). The first system shows a melody with lyrics "1 u 2 u 3 u 4 u 5 u 6 ti mi 7 - ke - ti mi 8 u" and chords E⁶, E, A, and A. The second system shows a melody with lyrics "1 ke timi 2 - ke - ti - mi 3 ke timi 4 ke timi 5 ke timi 6 - ke - ti - mi 7 ke timi 8 ke timi". The third system shows a melody with lyrics "1 ketimi 2 - ke - ti - mi 3 - ke - timi 4 keti - mi 5 ketimi 6 - ke - ti - mi 7 - ke - timi 8 keti - mi". The fourth system shows a guitar accompaniment with lyrics "1 - ke ti mi 2 - ke ti - mi 3 - ke ti mi 4 - ke ti mi 1 ke timi 2 - ke - ti - mi 3 - ke ti mi 4 - ke ti mi".

Alicia Keys - "Fallin" (2001)

Em ³ ³ Bm⁷ ³ ³

1 - o - le 2 - o - le 3 - o - le 4 - o - le

1 - o - le 2 - o - le 3 - o - le 4 - o - le

The Pussycat Dolls - "Buttons" (2005)

Dm Dm Dm Dm 4

1 u 2 u 3 u 4 u 5 6 7 8 9 10 11 12 13 14 15 16

1 2 3 4 5 6 7 8 9 10 11 12 13 14 15 16

Ziggy Marley & Paul Simon - "Walk Tall" (2009)

G D⁷

1 - ke - ti - mi 2 - ke - ti - mi 3 - ke - ti - mi 4 - ke - ti - mi

1 - ke - ti - mi 2 - ke - ti - mi 3 - ke - ti - mi 4 - ke - ti - mi

Joss Stone - "Free Me" (2009) - Vorsicht: Sitar solo-Mittelteil hat andere Akkorde

A D

1 - ke - ti - mi 2 - ke - ti - mi 3 - ke - ti - mi 4 - ke - ti - mi

I IV

A D

Bass

1 - ke - ti - mi 2 - ke - ti - mi 3 - ke - ti - mi 4 - ke - ti - mi

I IV

1 - ke - ti - mi 2 - ke - ti - mi 3 - ke - ti - mi 4 - ke - ti - mi

Maroon 5 - "Moves Like Jagger" (2010)

Bm⁷ Bm⁷ Bm⁷ Bm⁷ 4

1-ke-ti-mi 2-ke-ti-mi 3-ke-ti-mi 4-ke-ti-mi 5 6 7 8 9 10 11 12 13 14 15 16

vi

Em⁷ Em⁷ Em⁷ Em⁷ 8

1 2 3 4 5 6 7 8 9 10 11 12 13 14 15 16

ii

1 2 3 4 1 2 3 4 1 u 2 u 3 u 4 u

Robin Thicke - "Blurred Lines" (2013)

G G G G 4

1 u 2 u 3 u 4 u

I

D D D D 4

1 u 2 u 3 u 4 u

V

G G G G

1 u 2 u 3 u 4 u 5 u 6 u 7 u 8 u 9 u 10 u 11 u 12 u 13 u 14 u 15 u 16 u

I

D D D D

1 u 2 u 3 u 4 u 5 u 6 u 7 u 8 u 9 u 10 u 11 u 12 u 13 u 14 u 15 u 16 u

V

G G G G

1 u 2 u 3 u 4 u 5 u 6 u 7 u 8 u 9 u 10 u 11 u 12 u 13 u 14 u 15 u 16 u

I

D D D D

1 u 2 u 3 u 4 u 5 u 6 u 7 u 8 u 9 u 10 u 11 u 12 u 13 u 14 u 15 u 16 u

V

1 u 2 u 3 u 4 u 1-ke-ti - mi 2-ke-ti - mi 3-ke-ti - mi 4-ke-ti - mi

Pitbull - "Celebrate" (2014) - Vorsicht: Mittelteil hat kurz andere Akkorde

Dm⁷ G

1 - ke - ti - mi 2 - ke - ti - mi 3 - ke - ti - mi 4 - ke - ti - mi
ii V

1 2 3 4

1 u 2 u 3 u 4 u 5 u 6 u 7 u 8 u 9 u 10 u 11 u 12 u 13 u 14 u 15 u 16 u

Bruno Mars - "Uptown Funk" (2015)

Dm⁷ G⁷

1-ke ti mi 2-ke-ti mi 3-ke ti mi 4-ke-ti mi 5 ke ti mi 6-ke-ti mi 7-ke-ti mi 8 ke ti mi
ii V

1 2 3 4 1 2 3 4 1 2 3 4 1 u 2 u 3 u 4 u

1-ke-ti mi 2-ke-ti-mi 3keti-mi 4-ke-ti-mi 1 keti-mi 2ketimi 3keti-mi 4-ke-ti-mi

1.2.3.

1 ketimi 2 ketimi 3 ketimi 4-ke-ti-mi 5-ke ti mi 6-ke-ti-mi 7-ke ti mi 8-ke-ti-mi

4.

13 - ke - ti - mi 14 - ke - ti - mi 15 - ke - ti - mi 16 - ke - ti - mi

Adele - "Send My Love" (2015)

D D

1 ke-ti mi 2 - ke - ti - mi 3-ke-ti mi 4 - ke - ti - mi 5 6 7 8

I

Bm⁷ Bm⁷

9 ke-ti mi 10 - ke - ti - mi 11 ke-ti mi 12 - ke - ti - mi 13 14 15 16

vi

1 - ke - ti - mi 2 - ke - ti - mi 3 - ke - ti - mi 4 - ke - ti - mi

D D

1-ke-ti-mi 2 - ke - ti - mi 3 - ke - ti - mi 4-ke-ti-mi 5 6 7 8

Bm⁷ Bm⁷

1-ke-ti-mi 2 - ke - ti - mi 3 - ke - ti - mi 4-ke-ti-mi 13 14 15 16

J Balvin, Willy William, Beyonce - "Mi Gente" (2017)

Em Bm⁷

1 - ke - ti - mi 2 - ke - ti - mi 3 - ke - ti - mi 4 - ke - ti - mi

vi iii

1 - ke - ti - mi 2 - ke - ti - mi 3 - ke - ti - mi 4 - ke - ti - mi

Billie Eilish - "Therefore I Am" (2020)

Dm Dm A⁷ A⁷

1 2 3 4 5 6 7 8 9 10 11 12 13 14 15 16

vi III

Detailed description: This staff shows the first 16 frets of a guitar. Frets 1-4 are marked with an 'x' on the 6th string. Frets 5-8 are marked with an 'x' on the 5th string. Frets 9-12 are marked with an 'x' on the 4th string. Frets 13-16 are marked with an 'x' on the 3rd string. The notes are: 1 (open), 2 (open), 3 (open), 4 (open), 5 (open), 6 (open), 7 (open), 8 (open), 9 (open), 10 (open), 11 (open), 12 (open), 13 (open), 14 (open), 15 (open), 16 (open).

Dm Dm A⁷ Dm A⁷

1 u 2 u 3 u 4 u 5 u 6 u 7 u 8 u 9 u 10 u 11 u 12 u 13 u 14 u 15 u 16 u

vi III

Detailed description: This staff shows the first 16 frets of a guitar. Frets 1-4 are marked with an 'x' on the 6th string. Frets 5-8 are marked with an 'x' on the 5th string. Frets 9-12 are marked with an 'x' on the 4th string. Frets 13-16 are marked with an 'x' on the 3rd string. The notes are: 1 (open), 2 (open), 3 (open), 4 (open), 5 (open), 6 (open), 7 (open), 8 (open), 9 (open), 10 (open), 11 (open), 12 (open), 13 (open), 14 (open), 15 (open), 16 (open).

Doja Cat - "Paint The Town Red" (2023)

Gm Am⁷

1 u 2 u 3 u 4 u 5 u 6 u 7 u 8 u

ii iii

Detailed description: This staff shows the first 8 frets of a guitar. Frets 1-4 are marked with an 'x' on the 6th string. Frets 5-8 are marked with an 'x' on the 5th string. The notes are: 1 (open), 2 (open), 3 (open), 4 (open), 5 (open), 6 (open), 7 (open), 8 (open).